



# Hosta Happenings

September 2011

Vol. 15, Iss 6

**M.V.H.S.  
ANNUAL PICNIC  
SUNDAY, SEPT. 18, 2011  
3:30 PM**

**VANDER VEER  
BOTANICAL PARK  
HOSTA GLADE  
215 W. CENTRAL PARK  
DAVENPORT, IOWA**

(If the weather isn't cooperating, we can go inside the conservatory)

**PLEASE BRING A DISH TO SHARE, A CHAIR AND  
YOUR OWN TABLE SERVICE!  
THE CLUB WILL FURNISH CHICKEN AND SOFT DRINKS!**

RON SIMMERING IS BRINGING SOME H. 'BIX BLUES' TO SELL!

## **Letter from the President/Editor**

First of all, I want to apologize for the lack of newsletters in the last few months. The death of my husband had put me in the “doldrums”, and there were some personal things that I had to take care of; but, now, I’m back in the “swing of things.” Secondly, I would like to thank everyone for their good wishes and sympathy cards. It really meant a lot to me to know of the wonderful support you all offered.

Now on to Hosta Business:

These past few months have really taken a toll on my garden. A lot of my hostas have burned edges and many are starting to shut down. It seems a few weeks early, but then it is September. My ‘Captain Kirk’ looks marvelous, as do ‘Tenryu’, ‘Halycon’ and ‘Yellow River. In fact, most of the blues in my yard still look pretty decent..

I’d like to take a poll -- take a minute to go around your garden and let me know which of your hostas look good, even after our hot summer and lack of moisture. My email is: [corton02@gmail.com](mailto:corton02@gmail.com). I’d like to see how many reply and then I’ll summarize and let everyone know the results!!!

Sally Stewart has taken on the task of redoing the VanderVeer Hosta Glade garden maps and a great job she has done! So far, she has completed five. If you have ever helped name the hostas in the spring, you know how much new maps were needed. We now need five people to take the new and the old garden maps and compare with the actual garden to make sure the new one is accurate! Do you want to help? Sally will talk about it at the picnic!!! We’d like to get this comparison done yet this fall.

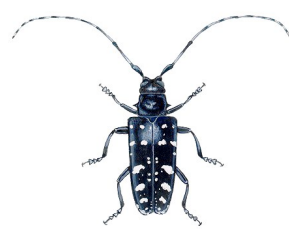
Don Musak has a great fall educational speaker lined up. Dr. Bob Olson will speak on October 16 at the Iowa Extension Office at 2 PM. He is a Past President of the AHS and is currently the Editor of the Hosta Journal. As in the past, IT IS FREE!!! So invite all of your friends to come.

Lastly, our annual picnic!!! I hope you all can make it! It will be nice to see you all -- so please come! The club will furnish the chicken and all you have to do is bring something to share!!! There is always a lot of good food and good times and it is a nice social event!

See you on the 18th!

## **BE ON THE LOOKOUT!**

*This is currently a problem in Iowa, but this beetle has been spotted in Ohio, which isn’t too far away! Residents are being asked to report any sightings to you county agricultural agent.*



The Asian Longhorned Beetle (*Anoplophora glabripennis*) is considered a serious pest in the United States and its native China, because there is no known cure. It is also found in areas of Japan and Korea. The beetle likely arrived in the US, hidden in solid wood packing materials. The first official US identification of the Asian Longhorned Beetle was in Brooklyn, NY in 1996 and infestations now exist in parts of New York, New Jersey and Massachusetts. Infestations were eradicated in Illinois and Hudson County, New Jersey.

The beetle is a serious threat to hardwood trees and has no known natural predator in the US. Typically, the Asian Longhorned Beetle has a one year life cycle. Adult beetles are active during summer and early fall months. The female Asian Longhorned Beetle chews depressions into the bark of trees to lay eggs. A single female beetle can lay 35 to 90 eggs, which hatch within 10-15 days. The worm-life immature beetles tunnel under tree bark and bore into healthy hardwood trees. The beetle larvae feed on living tree tissue during the fall and winter, pupate and emerge through perfectly round exit holes in the spring. Adult beetles feed on tree exteriors for 2-3 days after emerging and then mate.

To help control this pest DON’T move firewood. Asian Longhorned Beetle larvae and adults can survive hidden in firewood. A good rule of thumb is buy local, burn local. Regularly, inspect your trees. Early detection is important, so if you see any sign or symptom of an Asian Longhorned Beetle infestation, such as a dime-sized perfectly round exit hole or excessive sawdust buildup near tree bases, report it immediately.

# **Mississippi Valley Hosta Society**

**Presents! Dr. Bob Olson**

***"Use hostas to show off your garden"  
(not your garden to show your off hostas)***

**Sunday October 16th 2:00 pm to 3:30 pm**



**No cost, a free public offering !**

**Join us at the Scott County Extension**

Bob comes to us from Minnesota, a "backyard gardener" on an average sized city lot, has been growing hostas for over twenty-five years. He is past-President of The American Hosta Society and has edited *The Hosta Journal* (the official publication of the AHS) for the past 10 years. The Olson Garden has been on the National Garden Tour for the American Hosta Society three times and on the Men's Garden Club of America National Tour twice. The garden won the Harshbarger Award for Best Garden on Tour from the American Hosta Society and the Minneapolis Garden Club's Lehman Trophy for Best on Tour. During the past thirty years he has re-designed his garden three times—most recently in 2007—and now grows *fewer* hostas than he did ten years ago.

**Free: Sunday, October 16<sup>th</sup> 2:00 pm, at the**

**Scott County Extension**

**875 Tanglefoot Lane, Bettendorf, Iowa**

The following article is from the Northwest Indiana Hosta Society Newsletter:



## MOLES!

The first indication you have moles is probably when you tripped over a mole hill or turned an ankle in a mole run. That's because moles usually live about 5 feet underground. Their main food source is earthworms and grubs. Even if you have meticulously treated for grubs, the vast amount of rain that fell this summer has driven the earthworms closer to the surface and mole activity is now very apparent. Moles will not eat your hostas, but their mole runs can put air around a hosta root and kill it from lack of water. And they can accidentally **POD** a hosta out of the ground while making a run. Also, the mole runs will be used by those dreaded little **VOLES** during the winter months to munch on the hosta roots and crowns.

If you go online, you'll find several recipes for mole repellent. Trying to repel the little devils out of your yard and into your neighbor's yard (which is what my neighbor said he did-thank you very much Kevin!) may seem to be the correct ecological and humane course. The main ingredient in most of the repellents is castor oil. Moles hate the smell of it. But try asking the pharmacist for a couple of gallons of the stuff and he calls security. The repellents on the market are usually in a granular form. You divide your yard into two parts, starting the farthest away from where you want to drive the mole to-preferably Toledo. Lay it down in the direction you want it to go and water it in unless it's going to rain in the next 24 hours. In a couple of days, start applying from where you left off, again working towards the exit and again, water in well. It takes a few days for the mole to get the idea, but you will see the surface tunnels and mole hills popping up away from your lawn treatment. Unfortunately these repellents will run about \$20-\$40 per 5000 square feet so if you have a large area to treat, you may consider the alternative, more permanent treatment, of sending the little buggers to heaven.

This is where the poisonous worms are effective. No, these are not some new strain of live killer worms from a horror movie. These are a less than life-like gummy worm version that smells like earthworms to the mole but each has a delicious poisonous center. You poke a little hole in the mole hills and in the mole runs and push the worms down gently. Don't collapse the tunnel or the hill since you want the mole to come back. You will know it worked when you don't see any more surface activity. This way you don't have to dispose of a dead mole, mother nature will do the composting for you. Cost? About \$20 for 6 to 8 worms.

You can purchase a reusable mechanical mole trap that you stick into the mole run for about \$50. When the mole runs through, two sharp blades are activated-and then you have to empty the trap. I am pulling the sissy-card here since I do not want to empty mouse traps, mole traps or even slug traps. Happy Mole Hunting. MB

(As always, please follow all directions and heed all warnings on any product you decide to use & consider outdoor pets)

Jan brought this to our garden walk "happy hour"... it was great!!!

### Texas Caviar (Bean Dip)

From Janet Wilhelm

Bring to a boil the following:

- 3/4 cup sugar
- 2/3 cup apple cider vinegar
- 1/3 cup oil
- 3/4 tsp. pepper

Cool to room temp.

In a large colander place the following:

- 1 can pinto beans
- 2 cans black-eyed peas
- 1 can black beans
- 1 can whole corn
- 1 can (4 oz.) diced jalapenos

Rinse all and drain well

Dice the following:

- 1 green pepper
- 1 red pepper
- 1 red onion
- 1 cup celery

Place into a bowl. Add drained beans and mix. Pour vinegar mixture over all and mix. Store in refrig. until ready to serve. Serve with Tostito's Scoops chips or Trisquits.

**“Save the Date” - June 13 - 16, 2012 - AHS  
Convention - Nashville!!!**

“**Hostas, Friends and Music**” will be a time for visiting with old friends, making new ones, experiencing Nashville and of course, seeing Middle Tennessee gardens. The Scientific program will include: a panel on *Hosta Tips to Grow By*; Don Dean will share his hybridizing experience *Where Did That Trait Come From*; Jerry Weeks with *From Yon to Here* will discuss how hostas made their way from Asia to the New World; and, George Schmid, the Key Note speaker, will present his work on *Hosta Species*. Mike Shadrack will address hostas in Europe with *Eric Smith, Master Hybridizer*, Bob Solberg will talk on *The Future of Hostas* and Warren Pollack will lead a breakout session on recent hosta DNA work by Dr. Ben Zonnerveld of the University of Leiden, The Netherlands. Flo Chaffin of Specialty Ornamentals will discuss *Shady Characters* - Japanese maples, hydrangea and conifers for the various growing zones. There will also be two non-scientific sessions: **The Rise of the Southern Biscuit** and *Adelicia Acklen, Mistress of Belmont (Plantation)*.

A musical revue is planned for Wednesday evening after the Optional Tours. One tour is *Gardens of Nashville*, including the Parthenon, and the other is a historic tour of three *Civil War sites in Franklin, TN*, including Carnton Plantation and its 1860 period garden.

The Hat Contest will return on Saturday evening and a Photography Contest will be held. Categories and rules will be posted on the convention website.

With so many attendees driving to Nashville, we are looking forward to a great Hosta Show. You bring the leaves... We'll have the bottles.

If Country Music is on your agenda, we suggest attending the Grand Ole Opry on Tuesday evening to avoid missing any of the convention activities. Gray Line of Nashville has given the group a special rate which will include tickets, and transportation to and from the hotel. A special email address for this will be posted on the convention website. For further information, see [www.hosta2012.com](http://www.hosta2012.com) which will be activated in mid-October.

Ya'll Come. We'll be serving up Southern Hospitality and are Expecting You.

~~~~~  
**BAYER PRODUCTS FOR HOSTAS**

from Illinois Prairie Hosta Society Newsletter

A product we should all know about is Bayer Advanced Disease Control for Roses, Flowers and Shrubs. This systemic formula is for cure and prevention of Southern Blight, petiole and crown rot and is effective in treating powdery mildew, black spot and rust on other garden plants, including Hosta. The Bayer products will also discourage Japanese Beetles from eating roses and other plants including some trees, such as the Sand Cherry. Some evidence also shows that the products may discourage the Ash Borer, if applied both early spring and in the fall to the ash tree.

Follow directions on containers, mixing with water and spray on hosta petioles (leaf stems). Let the spray run down the crown or use it as a drench. A pump-style sprayer is easy to use. Since Bayer Advanced Disease Control works systemically, as soon the spray dries, it will not wash off or leave a visible residue and protects for two weeks. Apply at least three times per growing season 7 to 14 days apart. For best results, use in the early spring before 80-90 degree rainy weather begins. Bayer Advanced Disease Control should not be applied to edible plants.

**AHS DUES:** The American Hosta Society offers participation in all national activities, including a convention, 3 issues of "The Hosta Journal", and a directory. They also have a web page - [www.hosta.org](http://www.hosta.org). Dues are \$30/yr, \$57/2 yrs and \$600 life for an individual. Family memberships are also available at \$34/yr and \$62/2 yrs. Make your check to AHS and send to the Membership Secretary, Sandie Markland, PO Box 7539, Kill Devil Hills, NC 27948

~~~~~

**Midwest Regional Hosta Society Dues** are \$10/yr. Send your check to: Barbara Schroeder, 1819 Coventry Dr., Champaign, IL 61822-5239.

~~~~~

**MISSISSIPPI VALLEY HOSTA SOCIETY DUES** are \$7/YR. **Please make your check payable to MVHS (not Jim)** and send to JIM CATO, 12915 - 25TH ST. CT., MILAN, IL 61264. We offer 8 newsletters a year, reduced prices on hosta offerings, garden walks, first opportunity to buy plants at our annual hosta and plant sale and many other good opportunities.

Mississippi Valley Hosta Society  
909 Mississippi Blvd.  
Bettendorf, Iowa 52722

**WHAT'S HAPPENING:**

- Sept 18** - MVHS Annual Picnic, VanderVeer
- Oct 16** - Dr. Bob Olson, Free Talk at Iowa Extension Office, 2 PM
- Nov 13** - 2PM - MVHS Meeting
- Dec 2** - MVHS Annual Christmas Party

~~~~~

Visit our MVHS Web Site: **[mvhosta.org](http://mvhosta.org)**  
Other hosta and garden web sites:  
American Hosta Society - <http://www.hosta.org>  
Midwest Hosta Society - <http://www.midwesthostasociety.org>  
Hosta Library - <http://www.hostalibrary.org>  
Hosta Forum - questions/answers - <http://forums.gardenweb.com/forums/hosta>  
Mini Hosta Forum - <http://groups.yahoo.com/group/minihosta>

~~~~~

**LET US KNOW!!! IF YOU HAVE MOVED or HAS YOUR EMAIL CHANGED?**  
**Send your corrected info to JIM CATO, 12915-25th ST. CT., MILAN, IL 61264.**  
**Jim's email is [pussbug@aol.com](mailto:pussbug@aol.com).**