



Hosta Happenings

January 2011

Vol. 15, Iss 1

M.V.H.S. MEETING

**SUNDAY, FEBRUARY 13, 2011
1:00 PM**

**RIVERDALE FIRE STATION
(across from ALCOA)**

POT LUCK

**Bring a dish to share and your own table service.
Club will furnish meat and drink.**

PROGRAM
HOSTA BINGO
with GREAT prizes!!!!!!



LETTER FROM THE PRESIDENT

Hello,

First of all, thank you to the outgoing officers for two great years and secondly, a Big Thank You to the incoming board for helping run this club.

I'm excited about the coming year as some good programs are planned. I hope you all can come to the meetings to hear the speakers and partake of the social functions planned.....Included with this newsletter is a calendar of events.

We are again offering Bob Solberg's garden club hostas at great prices. We've only added \$1 to each to cover the cost of shipping. We have also included a picture of each hosta so you have an idea of what it looks like. Franc Freeman is again taking orders, so please follow the instructions on the order form. The due date for orders is April 30.

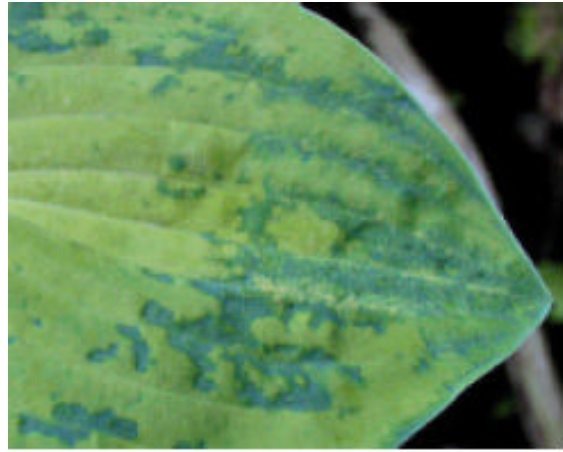
We are also going to have the Hosta Buck Incentive Program this year! Hosta Bucks will be given to you for activities in which you participate and then you can in turn use them, like money, at the Plant Sale, buy a Bob Solberg plant, Christmas party, bus trip, pay dues, etc.

If anyone incurs some expense connected with MVHS, please send the bill or receipt to me first and I'll approve and send it on to the treasurer for payment.

A reminder, MVHS will pay the tuition for any member, Iowa or Illinois, who wants to become a Master Gardener. Please ask any board member for information.

Another reminder....in an effort to "go green", save money on printing and postage and to keep our membership fee at a nice low price, we have been emailing this newsletter to those people who furnished their email address. A few "perks" for this --you get the newsletter faster with electronic mailing and you can enjoy full color photographs! To print color copies is very expensive - \$.59 per single sheet - and we won't be sending newsletters with color photos, etc. out to those people who get newsletters by mail. They will be black and white. So, if you have an email address and still get a US mail paper copy of the newsletter, please, please let us know your email address so we switch you over. It really saves the club a lot of money. Call me at 355-6973, or email and I'll change your mailing. My email is: corton02@gmail.com.

Carolyn



Hosta Virus X Research to Continue

One of the featured speakers at the 2010 AHS Convention was Dr. Ben Lockhart. He has recently finished his initial research on Hosta Virus X. The research will be continued by Dr. Lockhart and Grace Anderson at the University of Minnesota.

The proposed budget for the next phase of research is \$41,500 for a two-year project to span 2011 and 2012. The American Hosta Society has a web page dedicated to the HVX project where you can find details on all the latest information. I encourage you to check it out at:

www.americanhostasociety.org/hostavirusx.html

Club and individual donations are encouraged.

The MVHS Board is proposing we donate \$1,000 to this project and a vote will be taken at the February 13th meeting.

Article taken from the Michigan Hosta Society newsletter.

2011 HOSTA FINDER

Jim Cato is now taking orders for the 2011 Hosta Finder. It will cost \$14.00 this year and if you want it mailed to you, it will cost \$16.00. The books will be available at the March meeting.

To pre-order, please send a check made out to MVHS to Jim at 12915 - 25 St. Ct., Milan, IL 61264. His email is pussbug@aol.com.

The Hosta Finder is a wonderful reference and is a comparison of prices of hostas being offered from approximately 50 growers.

2011 SCHEDULE - MISSISSIPPI VALLEY HOSTA SOCIETY

JANUARY 22 - Winter Scientific Meeting, Lisle, IL.

FEBRUARY 13 - 1:00 PM - Pot Luck at Riverdale Fire Station, Hosta Bingo

MARCH 13 - 2:00 PM - Meeting at Riverdale Fire Station

APRIL 23 - 1:00 PM - Fluff & Buff, VanderVeer Hosta Glade (Rain Date is April 24)

APRIL 30 - 9:00 AM - Apply plant name tags at VanderVeer Hosta Glade

MAY 7 - 9:00 AM - Hosta Dig at VanderVeer Hosta Glade

MAY 9 - 9:00 AM - Hosta Dig at Bettendorf Children's Museum

MAY 29 - Plant Sale at Duck Creek Park Shelter #2

JUNE 5 - Car Pool to Dubuque Hosta Festival, Dubuque Arboretum

JUNE 12 - MVHS Bus Trip

JUNE 23-25 - AHS Convention in Marlborough, MA

JULY 7-9 - MRHS Convention in Madison, WI

JULY or AUGUST - Garden Walk

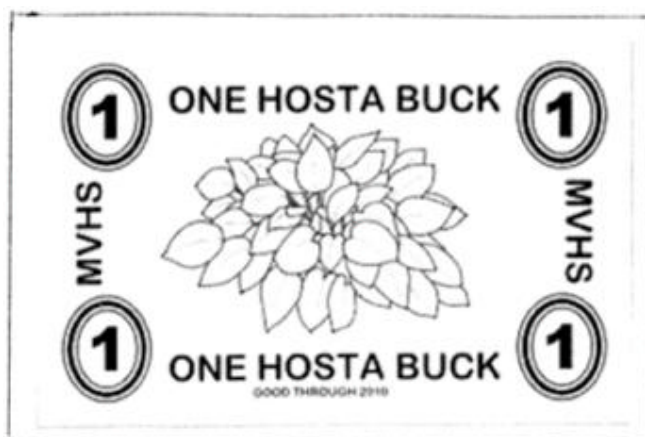
SEPTEMBER 18 - Annual Picnic at VanderVeer Hosta Glade, Plant Swap

OCTOBER 9 - 6:00 PM - Meeting at Riverdale Fire Station

NOVEMBER 13 - 2:00 PM - Meeting at Riverdale Fire Station

DECEMBER 2 - Annual Christmas Party

THE MVHS IS GOING TO HAVE THE "HOSTA BUCK" INCENTIVE PROGRAM AGAIN IN 2011. 2011 Hosta Bucks are **yellow**, and they can be used in 2011 and 2012. 2010 Hosta Bucks are blue and you can still use them until 12/31/11. **2009 Bucks were green and will no longer be valid.**



HOSTA BUCKS INCENTIVE PROGRAM

MVHS has decided to implement something new in the club, an incentive program. This program is intended to encourage more member involvement. Here's how it works: You will receive Hosta Bucks for activities you participate in. Differing values have been placed on each club activity. This list is not all-inclusive as items come up within the club they will be considered. If it is determined that they qualify a buck amount will be assigned to them. The work activities are based on 1 buck per hour with a maximum of 4 bucks.

- 1 Attend a club meeting (February, March, October, November)
- 1 Bring a snack item to a meeting (Potlucks are not included)
- 1 Bring a door prize to a meeting
- 1 Sign up a new member - Maximum of 5 per year
- 2 Chair a committee
- 1-4 Fluff and Buff
- 1-4 Plant Sale
- 1-4 Place nametags at VanderVeer
- 1-4 Pot hostas for plant sale
- 4 Write an original article for the newsletter
- 6 Give a talk where the request comes through the club
- 10 Open your garden to club

The Hosta Bucks can be applied to the purchase of any item the club sells. This includes Solberg plants, plant sale, membership dues, Christmas party, etc. The bucks earned this year can be applied to items this year or next year since you may earn some too late to spend this year. If they are not used by the end of the following year they are no longer valid. If you have any questions contact Sally Stewart at 359-4752 or sstewart@mvhosta.org.

MVHS - SOLBERG CLUB PLANTS
2011 ORDER FORM

Please remember all plants will be bare root. Pick up date and place will be announced later. DEADLINE FOR ORDERING IS APRIL 30. Send your form, along with your check (made out to MVHS) to: Franc Freeman, 20599 Utica Ridge Road, Davenport, Iowa 52804. Phone: 355-8534

NAME: _____ PHONE: _____

ADDRESS: _____ AMT. PAID _____

‘BATTLE STAR’ - (G. Randy Goodwin 2006) (sport of streaked seedling) - Medium (15"x36") Great color combination of gray green leaves and yellow margins and is distinct from across the garden. Sturdy hosta has good substance, dark lavender striped flowers in June. () X \$13 \$ _____

‘CRUMB CAKE’ -(Solberg 2008) - ('Cinnamon Sticks' X 'Cracker Crumbs') - Small (4" X 12") This rapidly growing hosta makes a very tight flat mound of honey-gold round leaves with mahogany petioles that are shiny, wonderfully wavy, and have very good substance. Its mahogany scapes have pretty lavender flowers in July. () x \$9 \$ _____

‘CURLY FRIES’ - (Solberg 2008) - ('Pineapple Upsidedown Cake' seedling) - Small (5" X 16") Best grown in half a day of sun, its highly ruffled narrow leaves emerge yellow and then fade to near white. The scape is deep purple, topped with lavender flowers. It makes a great container plant or grows very well in the garden. () x \$14 \$ _____

‘ELECTROCUTION’ - (Avent 2005) - ('Swoosh' X H. longissima) X 'Redneck Heaven') X 'Elvis Lives') - Medium, (13" X 28") It has narrow green leaves with a yellow margin that become white in more sun. What is electric about those leaves, however, is that they are very wavy and very twisted at the same time. Lavender flowers in June. () x \$13 \$ _____

‘FINAL SUMMATION’ - (Solberg 2008) - (Sport of 'Sum and Substance') - Large, (20" X 60" or more) This is the dark green-edged sport of 'Sum and Substance'. It has wide green margins, superior rich colors and slightly cupped, very round, giant leaves and typical lavender flowers in July. () x \$13 \$ _____

(continued on the back)

(continued) - SOLBERG CLUB PLANTS - ORDER FORM

'NATE THE GREAT' - (Solberg 2003) - (H. nigrescens X 'Tokudama Aureonebulosa') - Large, (22" X 40") Tall and proud with large round blue-green leaves that are deeply cupped and puckered, this large upright hosta is worthy of the front of the bed. Lavender flowers on tall straight scapes top this one off in July. Named for Bob's son, Nathan.

() x \$9 \$ _____

'SUMMER SQUALL' - (Solberg 2007) - (H. sieboldiana X 'One Man's Treasure' F2 seedling) Medium, (14" X 32" or larger) Rich blue color and nicely folded leaves, this "Longiana" may be the best and bluest of the lot. It makes a strong statement in the garden, good substance and sturdy leaves and is a great breeder. It has 3 foot scapes of light lavender flowers in mid-summer.

() x \$13 \$ _____

'TICKLE ME PINK' - (B. and D. Stegeman, Hack 2006) - ('One Man's Treasure' X 'Squash Casserole') - Medium, (8" X 28") Its has glowing yellow leaves with twisted reddish tips and produces deep red scapes with flowers that are pinkish lavender in late summer. The leaves may even have some red streaks in the fall.

() x \$13 \$ _____

'TINY BUBBLES' - (Solberg 2008) - ('Corkscrew' X 'Lemon Frost') - Small, (8" X 16") This bright yellow harbinger of spring has arrowhead-shaped leaves with good substance but it is the closed orchid flowers that persist for weeks in mid-summer on perfectly proportioned yellow scapes that make this a very unique hosta. It is a sturdy little plant that grows very well.

() x \$9 \$ _____

'TONGUE TWISTER' - (Solberg 2008) - ('Iwa' X 'Blue Blush' o. p.) - Small, (8" X 18") With its dark green leaves that twist upward out of the clump, this great little hosta looks as fresh in October as it does in May. It has great substance, rich color. Light purple scapes produce light lavender flowers in September and light purple pods in October.

() x \$9 \$ _____

TOTAL \$ _____

A GREAT PLACE TO USE YOUR HOSTA BUCKS!!!!



Battle Star



Crumb Cake



Curly Fries



Electrocution



Final Summation



Nate the Great



Summer Squall



Tickle Me Pink (top)



Tongue Twister



Tiny Bubbles

HOSTA WORD SEARCH

By Tom [Lakowski](http://SWMOGARDEN.COM) at SWMOGARDEN.COM

T E U Q U O B T N A R G A R F
A C L F T S L U G U L S S A R
T N I S O S W E E T J D O E S
S A B F I R S T F R S N G Y T
O T E Y R O L G S L U A P E A
R S R G T P U M U J L H R H I
F B T I A S G G E S U G A T N
T U Y R P I H L P A T N Y F E
S S A U D T O L G G I I E O D
R D J A R M E Q U A B Y S A G
I N R A A N B A L E B A L T L
F A E C D A G A S T A R U S A
P M A O G G U L S E R P G O S
S U R E A R T H A N G E L H S
G S R A E E S U O M E U L B T



HOSTA OF THE YEAR

- | | |
|----------------------------|----------------------|
| 1996 So Sweet | 2005 Striptease |
| 1997 Patriot | 2006 Stained Glass |
| 1998 Fragrant Bouquet | 2007 Paradigm |
| 1999 Paul's Glory | 2008 Blue Mouse Ears |
| 2000 Sagae | 2009 Earth Angel |
| 2001 June | 2010 First Frost |
| 2002 Guacamole | 2011 Praying Hands |
| 2003 Regal Splendor | 2012 Liberty |
| 2004 Sum and Substance | |

MISSISSIPPI VALLEY HOSTA SOCIETY

The following people have dues that expire December 31, 2010!! Please send your check for \$7 (made out to MVHS) to the new Treasurer:

Jim Cato
12915 - 25th St. Ct.
Milan, IL 61264

Better yet, renew it for two years and send a check for \$14!

Sue Anxiaux
Stanley & Kay Bates
Jennifer Betker
Cindy Bottrell
Rita Brautigam
Brenda Bumann
Mike Carstensen
Kay Collins
Steve & Joan Conrad
Joyce Corken
Dennis & Gloria Creen
Shirley Crusen
Wilmer & Helene Denker
Julie Dobbeleare-Castens
Howard & Sandy Fedler
Sandra Fleming
David & Pamela Fuller
Joni Henri
Mary Ann Hentrich
June Hessell
Teresa Holmquist
Jim & Betsy Huber
Ed & Sandy Hughes
Martha Jinks
Mary Johannsen
Wes & Mary Kay Johnson
Jackie Kallenberger
Judy Klindt
Sandy Lane

Babara Marsden
Terry McAnally
Roxanne Meyer
Don Musak
Alice Nielsen
Kris Overmann
Brian & Gail Paarmann-Nikulski
Kris Petersen
Dean & Donna Piatt
Karen Pierce
Cathy Pitman
Joel & Judy Rutledge
Kim Schluenz
Diane Scotland
Dennis & Sherri Scrutchfield
John & Patty Sedlock
Joe Shindelar
Harry & Patricia Sievers
Ed & Susan Slivken
Jane Smay
Melvin & Lyn Sours
Lynn Summers
Robert & Margaret Tuftee
Shirley Ullrich
Jerry & Jeanne VandeWiele
Sandra Wales
Shirley Waters
Jay & Janet Wilhelm
Kathleen Wolfe

Snowflakes

by Henry Wadsworth Longfellow

Out of the bosom of the air,
Out of the cloud-folds of her garments shaken,
Over the woodlands brown and bare,
Over the harvest-fields forsaken,
Silent and soft and slow
Descends the snow.

“ISTHMUS IN JULY”

2011 Midwest Regional Hosta Convention Registration Form

July 7-9 Sheraton Hotel Madison, Wisconsin

Hosted by the Wisconsin Hosta Society

Register online and pay by credit card at: www.wihostasociety.com

Or send in one registration form with check for each person - Please print

Name [as you want it on your badge] _____

Address _____ City _____ State _____ Zip _____

Home phone _____ Email _____

Publish my name in Convention attendee list? Yes _____ No _____

* Registration confirmation will be sent via e-mail only

Registration fee includes four meals: Friday Pig Roast, Saturday breakfast, Saturday box lunch, and Saturday banquet; convention hosta and handbook, auction, vendors, hosta leaf show, Saturday garden tours, keynote speaker Ed Lyon, speakers Mark Dwyer and Bob Simiele, Judges Clinic I, and Hospitality Room Thursday, Friday, and Saturday

Please select

\$144.00-Early Full Registration [by June 9]

\$164.00-Full Registration [after June 9]

I will donate plants or items for the Friday night auction; Approximate number _____

Meals

Friday Pig Roast

Saturday Breakfast

Saturday Box lunch

Saturday Banquet choice

Beef Salmon Vegetarian

I request all vegetarian meals

Judges Clinic, Friday, July 8 from 8 to 11 am

I will attend Judges Clinic 1

A current **Judges Handbook** is required. You can download the free Judges Handbook at www.hosta.org.

Check here if you want to purchase the official handbook and binder at the clinic. Cost is \$10 payable at convention.

Hosta Leaf Show - preparation time Thursday 7 to 10 pm ♠ Friday 7 to 11 am

Check if you plan to: Enter Judge Clerk

Judging will begin Friday, July 8 at 12 noon Check below if you plan to have entries in each:

___ Cutleaf [limit 20 entries] ___ Educational Display ___ Artistic Design

___ Container Grown ___ Non-competitive Exhibit ___ Specialty Division

___ Trough container for Effect ___ Seedling and Sport Award [limit 5 entries]

Speakers

Mark Dwyer – Rotary Gardens Friday 1:15-2:20 pm

Robert Simiele –hostas to music Friday 2:30-3:10 pm

Ed Lyon – Keynote speaker - Director Allen Centennial

Garden Saturday 8 pm

Auction

Silent and Voice – Friday evening

Vending – Thursday 4-9 pm, Friday 8 am-5 pm, and

Saturday 9 am-4 pm

Tours

Visit 5 beautiful gardens on Saturday 7 am-2 pm

Total Registration amount \$ _____

Send form and check

Ralph Pelkey, Treasurer, WHS

11921 W. State Road 59

Evansville, WI 53536

Checks payable to **WHS**

For questions e-mail

hostameetjuly11@gmail.com

HOTEL: Sheraton Madison Hotel for room reservations at (608) 260-1162 or www.Sheraton.com/Madison.

Mention attendee code [HOSTA]. The group rate of \$103 plus tax is available through June 11, 2011.

706 John Nolen Drive ♠ Madison, WI 53713 ♠ Fax 608/234-1027

For additional information, schedules, updates or questions, see www.wihostasociety.com

Midwest Regional Hosta Society Convention 2011

Madison, Wisconsin, July 7, 8, 9

All hosta enthusiasts are invited to the annual Midwest Regional Hosta Society convention July 7, 8, and 9 in Madison, Wisconsin.

Many of our members across these mid-western states have never been to a hosta convention. There are educational activities centered around the genus *Hosta*. Convention attendees gather ideas and examples of ways to improve their gardens and learn more about this most popular perennial plant. Activities include:

Garden Tours - Attendees will tour five private gardens,

Leaf Show - We will have a hosta leaf show. After judging Friday afternoon you will be able to see which were judged the best, again providing you with ideas as to possible additions to your garden.

Plant Sales - Selling hostas will be vendors from North Carolina, Washington, Georgia, Iowa, Missouri, Ohio, and Wisconsin. You will be able to purchase hostas Thursday, Friday, and Sat.

Auction - We will have an auction Friday eve. [silent, and live bidding!]

Judging Clinic - We will offer Judging Clinic #1 Friday morning. Cost-\$10, or you can down-load the required materials on your computer at home.

Food - We will have a Pig Roast Friday evening, overlooking beautiful Lake Monona ; a banquet Saturday evening, with a cash bar; a buffet breakfast Saturday morning, and a box lunch Saturday midday.

Banquet - Our banquet speaker will be Ed Lyon, Director of Allen Centennial Garden on the Madison campus of the University of Wisconsin. Speaking Friday afternoon, while the hosta show is being judged, will be Mark Dwyer, Director of Horticulture of Rotary Gardens in Janesville, Wisconsin (an AHS Display garden); and Robert Simiele, who links beautiful pictures of hostas with beautiful music.

Hostatality - In the evenings, after vending Thursday evening, after the auction Friday evening, and after the banquet Saturday evening, we will have "HOSTATALITY."

Reservations: Sheraton Madison Hotel, (800) 325-3535, or 1 (608) 251-2300, where the special room rate will be \$103 plus tax.

Questions? Irwin Johnson, (262) 786-1758

WINTER SCIENTIFIC MEETING

A few facts gleaned from the information at the Winter Scientific meeting held in Lisle, IL on January 22:

DID YOU KNOW THERE ARE NOW 4,810
REGISTERED HOSTAS!

How do you know a Tetraploid Hosta when you see one?

1. Size and clump habit (tetraploid is smaller with shorter petioles, denser habit)
2. Substance (tetraploid has more substance, thicker cell walls, larger stomate guard cells)
3. Bloom Scape (tetraploid has shorter and thicker scapes, denser flower arrangement)
4. Flowers (tetraploid has larger flower parts, larger pollen)
5. Seed pods (tetraploid pods are shorter and fatter)
6. Growth rate (tetraploid grows slower)
7. Shorter roots

~~~~~

In looking thru my notes, I found the following. It was supplied by Larry Tucker of the Mid South Hosta Society. It's several years old, but still good, and offers these amusing names for groupings of animals:

- A gaggle of geese
- A pride of lions
- A school of fish
- A murder of crows
- A skein of geese (in the air not on the ground)
- An exaltation of larks
- A brace of bucks (deer)
- A heard of deer
- A quarry of deer (a heap of dead deer killed in the hunt)
- A colony of anys
- An army of caterpillars
- A labor of moles
- A dray of squirrels
- A murmuration of starlings
- A paddling of ducks
- A bale of turtles
- A clowder of cats
- A piddle of pullies
- A swarm of bees
- A stand of flamingos



# AHS 2011 National Convention Registration Form

**June 22nd-25th, 2011    Marlborough, Massachusetts**  
**Hosted by the New England Hosta Society**

Name (as it will appear on your name badge) \_\_\_\_\_  
 Address \_\_\_\_\_ City \_\_\_\_\_  
 State (or Country if outside U.S.) \_\_\_\_\_ Zip/Postal Code \_\_\_\_\_  
 E-mail \*\* \_\_\_\_\_ Phone ( Day/Evening/Cell ) \_\_\_\_\_  
 \*\* Registration confirmations will be sent via e-mail only.    \_\_\_\_\_ Do not include me in the Attendees List

**PLEASE SELECT ONE:**

- \_\_\_\_\_ \$225.00 Early Full Registration *(postmarked by 5/1/2011)*
- \_\_\_\_\_ \$300.00 Late Full Registration *(postmarked after 5/1/2011)*
- \_\_\_\_\_ \$90.00 Meals only

(Cancellation charges may apply.)

**DINNER OPTIONS:**

- |                   |                    |
|-------------------|--------------------|
| <b>FRIDAY:</b>    | <b>SATURDAY:</b>   |
| _____ New England | _____ Boston Scrod |
| _____ Pot Roast   | _____ Prime Rib    |
| _____ Vegetarian  | _____ Vegetarian   |

**OPTIONAL TOURS AND MEALS**

- \_\_\_ Wednesday: \$50.00 Connecticut's Best - Includes a box lunch    \_\_\_ Thursday: \$35.50 Clambake or Chicken BBQ  
 \_\_\_ Sunday: \$40.00 South Eastern Mass. - Includes a box lunch

**JUDGES CLINICS** Please note which clinic you will attend. A current handbook is required.  
 \_\_\_ Clinic I: 6/23 2-6pm    \_\_\_ Clinic II : 6/22 7-9pm    \_\_\_ Clinic III: 6/23 7-8am

**JUDGES HANDBOOK** You can download a handbook for free at: [www.hosta.org](http://www.hosta.org)  
 \_\_\_ Check here if you want to receive the handbook at the clinic. Please add \$10.00 to registration fee.

**HOSTA SHOW**

See show information at: [www.hosta2011.org](http://www.hosta2011.org).

I plan to: \_\_\_ Enter \_\_\_ Judge \_\_\_ Clerk

Please enter number of entries in each category you plan to submit: *(Limit of 25 for Division I)*

| Division        | # | Division        | # |
|-----------------|---|-----------------|---|
| I - Leaf Show   |   | IV - Education  |   |
| II - Containers |   | VI - Artistic   |   |
| III - Troughs   |   | VII - Specialty |   |

**First Look Competition Entries**

# of Seedlings \_\_\_ & # of Sports \_\_\_ for competition

Note: We reserve the right to limit the number of entries.  
 If this becomes necessary we will inform you.  
 Please see rules and regulations for plant entry at:  
[www.hosta2011.org](http://www.hosta2011.org)

**TOTAL AMOUNT Payable in US \$ \_\_\_\_\_**

*(Include Registration, Optional Tours & Handbook)*  
 \_\_\_ By check: Payable to "AHS 2011 Convention"  
 \_\_\_ **By credit card** (\$8.95 fee will be added to your total)  
**International Attendees ONLY**

Send payment and form to:  
 Donna Lane, Registrar  
 19 Manchester Road  
 Norwood, MA 02062-1606  
 For questions, e-mail [donnamlane@verizon.net](mailto:donnamlane@verizon.net)  
 or call 781-769-3854

**HOTEL**

For "American Hosta Society" convention rate of \$109+tax  
 Call the Best Western Royal Plaza and Hotel at  
**1-888-543-9500**

**CHI-TOWN to BEAN-TOWN**  
**AMTRAK TRANSPORTATION INFORMATION**  
[www.amtrak.com](http://www.amtrak.com) Call for ticket price/information (800) 872-7245

**The LAKE SHORE LIMITED**

Chicago, IL to Worcester (pronounced Wooster), MA., is 20 hours 27 minutes with several stops along the way to get on the train.. Get a printable schedule at

[www.amtrak.com/servlet/ContentServer/AM\\_Route\\_C/1241245664423/1237405732511](http://www.amtrak.com/servlet/ContentServer/AM_Route_C/1241245664423/1237405732511)

Train stops at:

Chicago, IL - Union Station (CHI)  
South Bend, IN (SOB)  
Elkhart, IN (EKH)  
Waterloo, IN (WTI)  
Bryan, OH (BYN)  
Toledo, OH (TOL)  
Sandusky, OH (SKY)  
Elyria, OH (ELY)  
Cleveland, OH (CLE)  
Erie, PA (ERI)

Depew, NY - Buffalo (BUF)  
Rochester, NY (ROC)  
Syracuse, NY (SYR)  
Utica, NY (UCA)  
Schenectady, NY (SDY)  
Rensselaer, NY-Albany (ALB)  
Pittsfield, MA (PIT)  
Springfield, MA (SPG)  
Worcester, MA (WOR)

Choice of Departing Day: Monday June 20, 2011 or Tuesday June 21, 2011  
Train # 448 (same # both days) Arrives in Worcester @ 6:57pm

Return Date: Sunday June 26, 2011 Train # 449 Leaves Worcester @ 12:58pm

For AHS Convention Senior (age 62+) 15% discount, mention Code # D0D1E  
Under age 62 discount of 10%, mention Code X58D-909

Use advanced pay or "E" ticketing.

There is a snack car and a dining car on the train. Menu & prices available at [www.amtrak.com](http://www.amtrak.com). Expect the train to be slightly more comfortable than a Greyhound bus.

Transportation from Worcester to the convention site in Marlborough both days and back to the train on Sunday will be provided.

There is a block of tickets reserved at this discount. Purchase your tickets as early as possible. Ticket prices will go up after the block is sold and will continue to go up the closer it gets to departure date.

After you purchase your ticket, (or if you have any questions) please contact Indiana Bob Balitewicz at [rbalzy@netnitco.net](mailto:rbalzy@netnitco.net) or call (219) 926-1006. Bob needs an accurate count of how many people they will need to transport.

**ALL ABOARD!**

**AHS DUES:** The American Hosta Society offers participation in all national activities, including a convention, 3 issues of "The Hosta Journal", and a directory. They also have a web page - [www.hosta.org](http://www.hosta.org). Dues are \$30/yr, \$57/2 yrs and \$600 life for an individual. Family memberships are also available at \$34/yr and \$62/2 yrs. Make your check to AHS and send to the Membership Secretary, Sandie Markland, 8702 Pinnacle Rock Ct., Lorton, VA 22079.

~~~~~

Midwest Regional Hosta Society Dues are \$10/yr. Send your check to: Barbara Schroeder, 1819 Coventry Dr., Champaign, IL 61822-5239.

~~~~~

**MISSISSIPPI VALLEY HOSTA SOCIETY DUES** are \$7/YR. **Please make your check payable to MVHS (not Jim)** and send to JIM CATO, 12915 - 25TH ST. CT., MILAN, IL 61264. We offer 8 newsletters a year, reduced prices on hosta offerings, garden walks, first opportunity to buy plants at our annual hosta and plant sale and many other good opportunities.

Mississippi Valley Hosta Society  
909 Mississippi Blvd.  
Bettendorf, Iowa 52722

**WHAT'S HAPPENING:**

**Mar 11-12** - Hosta College, Piqua, OH  
**Mar 13** - MVHS Meeting, 2 PM, Riverdale Fire Station

~~~~~

Visit our MVHS Web Site: **mvhosta.org**
Other hosta and garden web sites:
American Hosta Society - <http://www.hosta.org>
Midwest Hosta Society - <http://www.midwesthostasociety.org>
Hosta Library - <http://www.hostalibrary.org>
Hosta Forum - questions/answers - <http://forums.gardenweb.com/forums/hosta>
Mini Hosta Forum - <http://groups.yahoo.com/group/minihosta>

~~~~~

**LET US KNOW!!! IF YOU HAVE MOVED or HAS YOUR EMAIL CHANGED?**  
**Send your corrected info to JIM CATO, 12915-25th ST. CT., MILAN, IL 61264.**  
**Jim's email is: [pussbug@aol.com](mailto:pussbug@aol.com)**